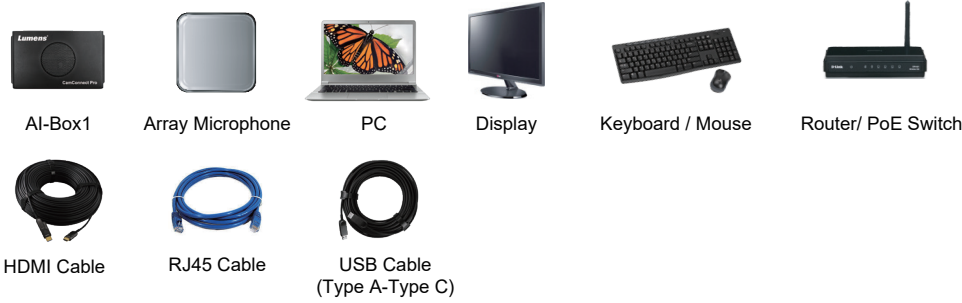


1. Before You Get Started

1.1 What You Need



1.2 Array Microphone

Please confirm compatibility of the AI-Box1 with your array microphone. Ensure the microphone and any control software is installed.
Please see Lumens website for the latest supported microphones.

1.3 PTZ Camera (Maximum 4 units)

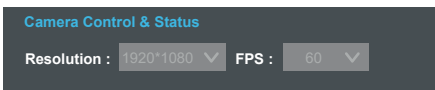
Configure the Camera settings as follows:
 Make sure the Camera and the AI-Box1 are in the same IP range.

■ Firmware Update

Make sure the camera firmware is up to date. Go to the Lumens website support tab to download the latest version.

■ Resolution Setting

Please make sure that each camera and the AI-Box1 are on the same output resolution. AI-Box1 default is 1080p/60fps. (Please refer to [4. AI-Box1 Setting](#))
 ※ Ensure AI-Box1 and the cameras are both outputting 1080P/ 60fps

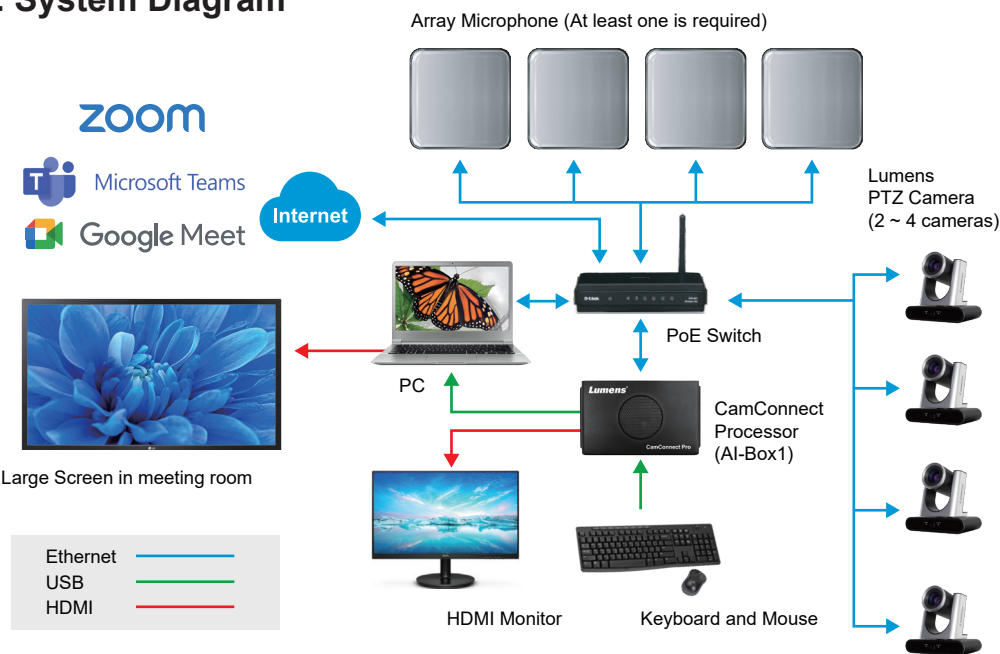


■ Motionless Preset

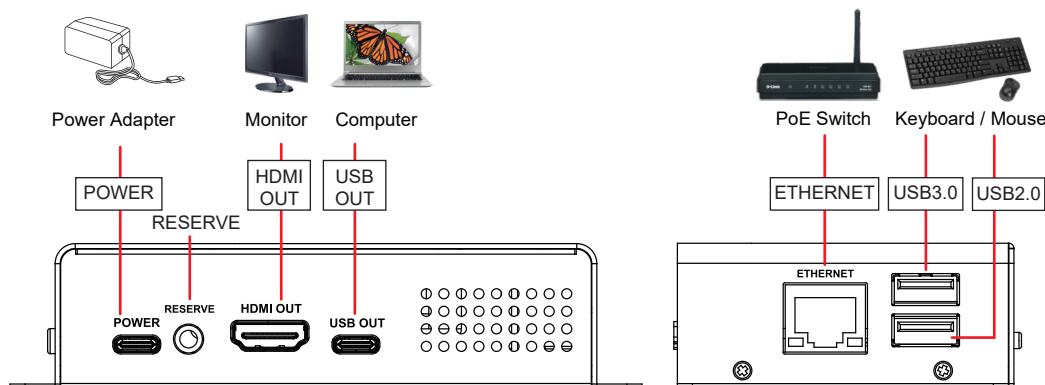
Motionless preset momentarily holds the last frame when the camera changes position to create a clean switch without seeing camera movement on screen. Activate the motionless preset mode on the cameras.

- OSD Menu : [System] > [Motionless Preset] > [On]
- Webpage : depending on the camera model, the setting is either in [Setting] > [Camera] > [Pan Tilt Zoom] > [Motionless Preset] > [On] or [Live View] > [Camera Setting] > [PTZ] > [Motionless Preset] > [On]

2. System Diagram

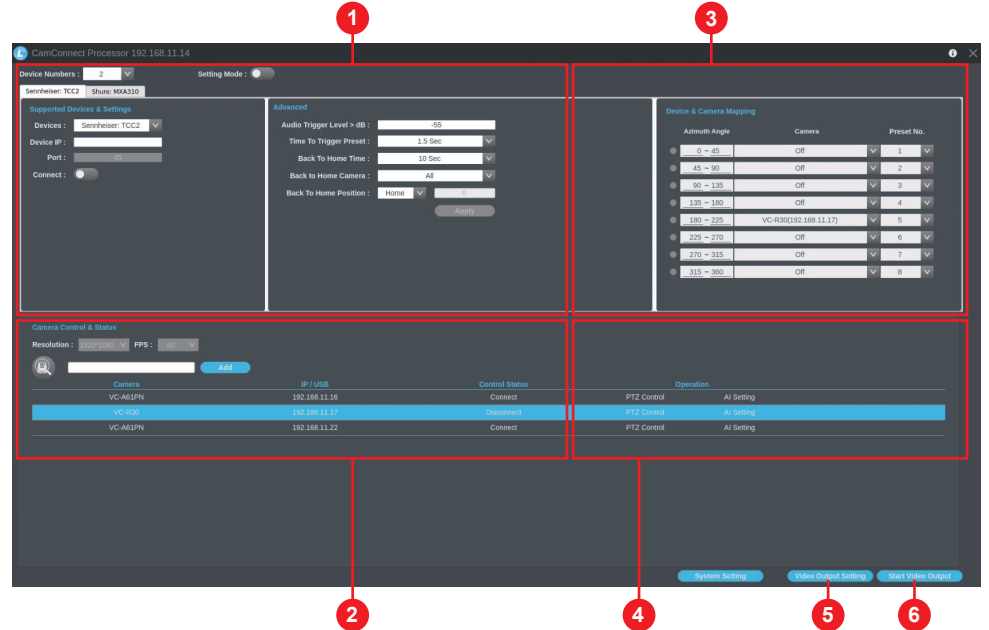


3. Hardware Connection



4. AI-Box1 Setting

- ※ Connect the AI-Box1 to a keyboard and mouse. Connect a monitor via HDMI.
- ※ Go to the Information tab **i** to confirm that AI-Box1 is on the latest firmware.
- ※ Settings can also be operated on AI-Box1 webpage. (IP listed on the title bar of CamConnect Processor)
 Please refer to the AI-Box1 User Manual for webpage settings.



4.1 Array Microphone Setting

- Device Numbers : Select the number of microphones you are using. (AI-Box1 supports the use of different types of microphone)
- Devices : Select the microphone you want to set up.
- Device IP : Type in the IP Address of microphone.
- Port : Use Default except for Nureva where the port should be selected.
- Connect : To activate the microphone to detect sound.
- Advanced : Settings for audio trigger level, time to trigger preset and back to Home parameters.

4.2 Camera Connection (Only Lumens Cameras are supported)

- The Resolution / FPS must match the AI-Box1 (Please refer to [1. Before You Get Started](#))
- Click search to display all IP cameras on the same local Network.
- Click [Connect] to link to a camera. (When connected, the line is highlighted in blue)

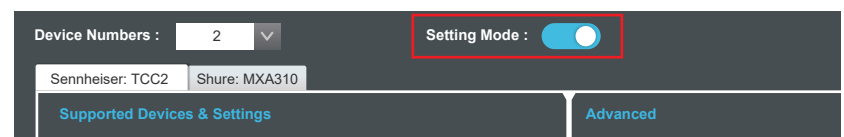
Camera	IP / USB	Control Status
VC-A61PN	192.168.11.16	Connect
VC-R30	192.168.11.17	Disconnect
VC-A61PN	192.168.11.22	Connect

4.3 Camera Preset Position Setting

※ Please follow [6. Example Azimuth / Array Configurations](#).

4.3.1 Enable Setting Mode.

Microphone will receive the audio signal, but won't trigger camera preset when setting mode enabled.



4.3.2 When the camera is connected, the microphone starts scanning the room for voices.

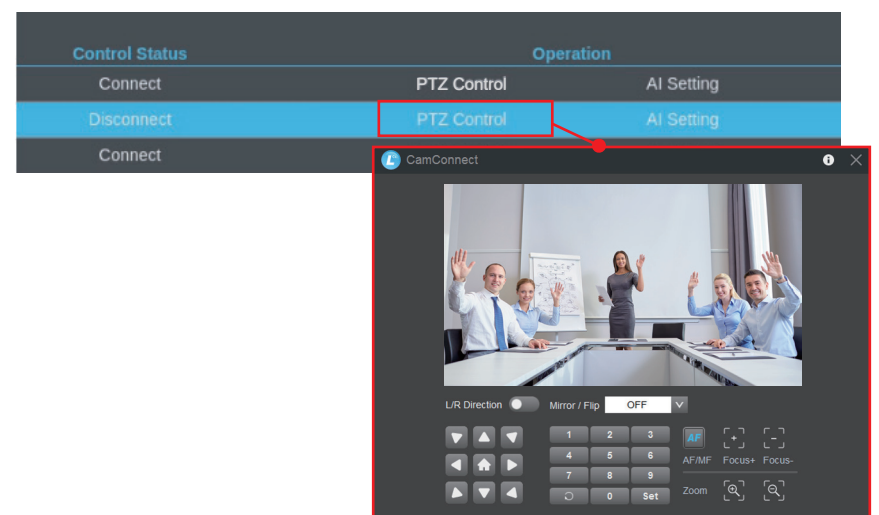
When a voice is detected the corresponding Azimuth Angle will turn green. This will help you set up presets for the room.

Tip: Azimuth Angle values can be changed to suit your room.

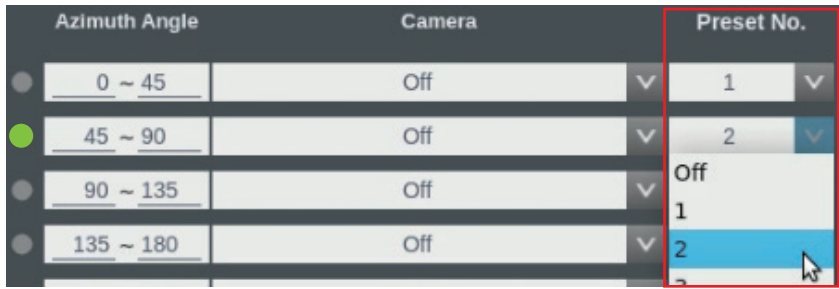
Azimuth Angle	Camera	Preset No.
0 ~ 45	Off	1
45 ~ 90	Off	2

4.3.3 After confirming the azimuth settings, click [PTZ Control] to set camera preset positions.

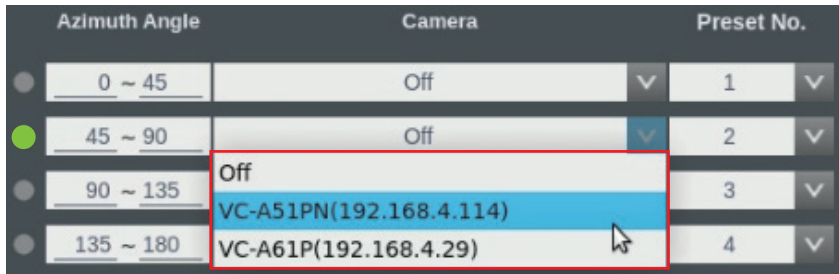
(Presets also can be set on the remote control.)



4.3.4 To save a Camera position, select a preset number.

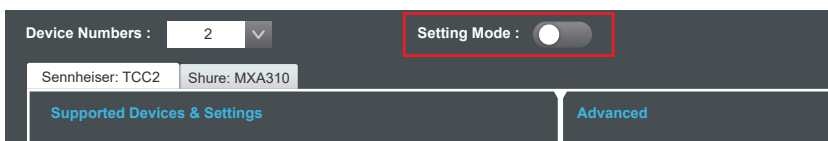


4.3.5 If multiple cameras are connected to the AI-Box1 select the preferred camera from the drop-down menu under Device and Camera mapping.



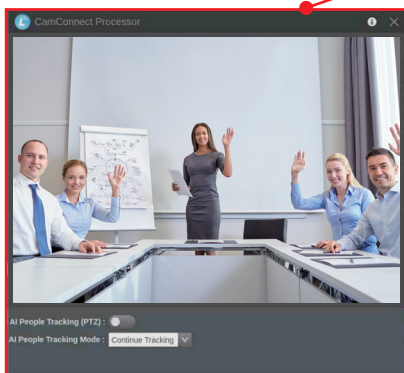
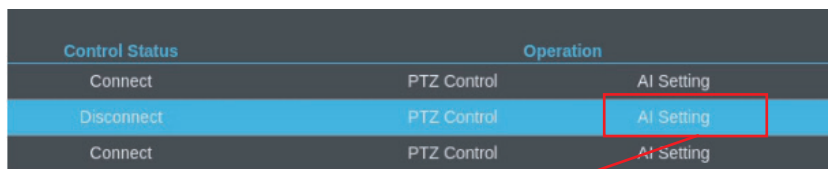
4.3.6 Disable Setting Mode

After Device & Camera Mapping completed, disable the setting mode to trigger camera to the preset position.



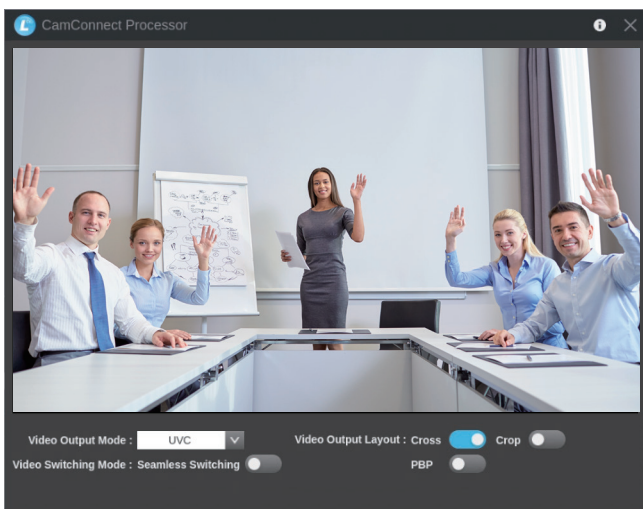
4.4 AI Setting

- AI people-tracking : Keeps the target in the center of the frame.
- Center Stage : After triggering to the preset position, the tracking target will be centered, and the tracking will stop after 5 seconds.
- Continuous Tracking : The camera will automatically track the target.



4.5 Video Output Setting

- Video Output Mode : Select HDMI or UVC
HDMI : Output to a display or matrix
UVC : USB output to video conferencing software
- Video Output Layout : Set the output layout. Cross, PBP and Crop.
- Seamless Switching : Display the current target in full screen. Image switching will be triggered by Microphone signals.

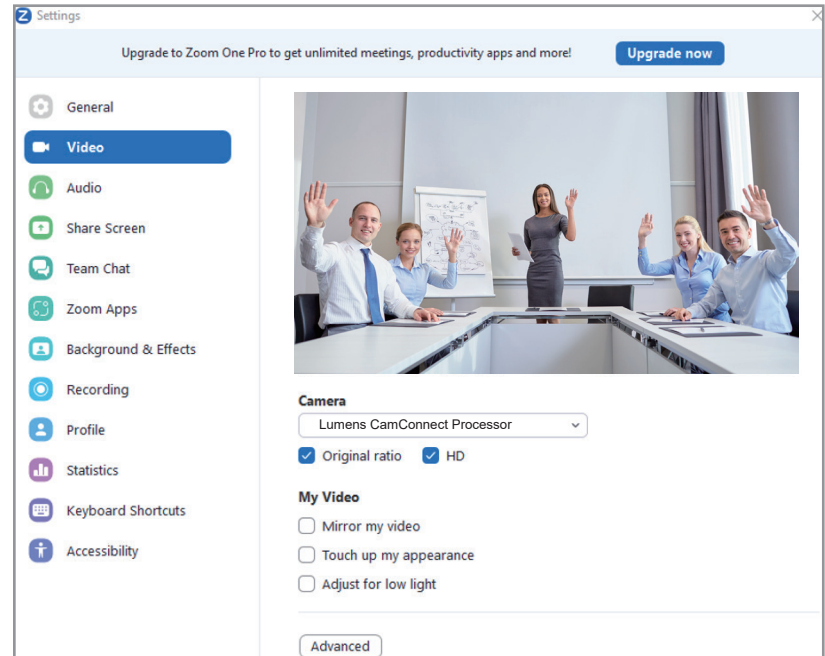


4.6 Start Video Output

- Click to start streaming **Start Video Output** output live video.

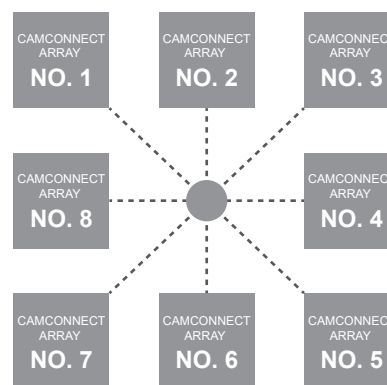
5. Use AI-Box1 with Video Conference Software

- Set AI-Box1 Video Output Mode to UVC and click **[Start Video Output]**.
- Launch your video conference software. (e.g., Skype, Zoom, and Teams)
- Select Video Source: **[Lumens CamConnect Processor]**

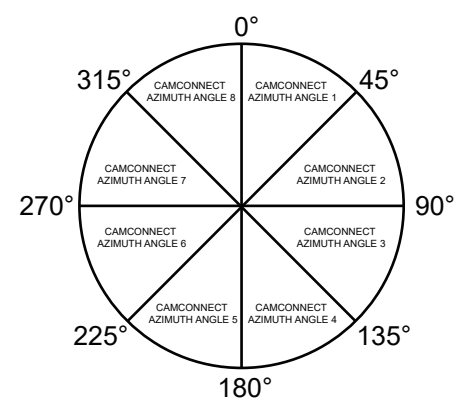


6. Example Azimuth / Array Configurations

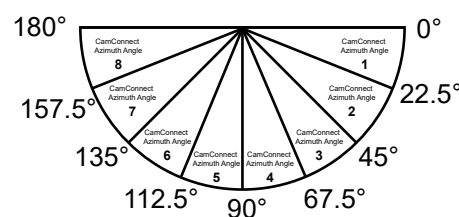
■ SHURE



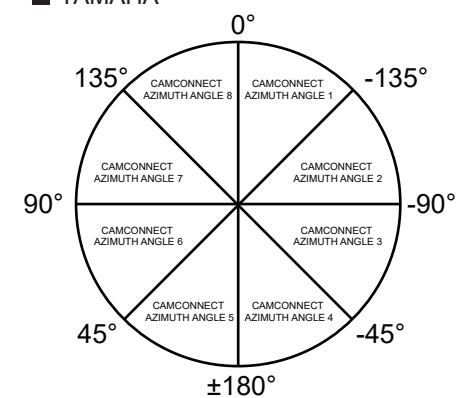
■ SENNHEISER



■ NUREVA



■ YAMAHA



* Please visit <https://www.youtube.com/mylumens> to watch related videos.

